



Hambro Hill | | Rayleigh | SS6 8BW
Guide Price £500,000 - £525,000

bear
Estate Agents

Guide Price £500,000 - £525,000

Bear Estate Agents are delighted to present this beautifully modernised three bedroom semi-detached home, ideally located close to local amenities and offering excellent access for families and commuters alike. Finished to a high standard throughout, this property provides stylish and contemporary living space with a practical layout perfectly suited to modern day living.

Internally, the home boasts a spacious separate lounge, three well-proportioned bedrooms including a generous main bedroom with ensuite, and a newly fitted modern family bathroom. Every room has been tastefully updated, creating a true move-in ready home with a bright and welcoming feel throughout.

Externally, the standout feature of this fantastic property is the impressive 120ft rear garden, offering an exceptional outdoor space rarely found. With side access, off street parking, a large summer house complete with power and lighting, and stunning views overlooking an equestrian field, this garden provides the perfect setting for entertaining, relaxing, or enjoying peaceful countryside-style surroundings right on your doorstep.

- Semi Detached House
- Off Street Parking
- Modernised Throughout
- Large Rear Garden Overlooking Equestrian Land
- Three Bedrooms
- Side Access
- Ensuite Bathroom
- Close To Local Amenities

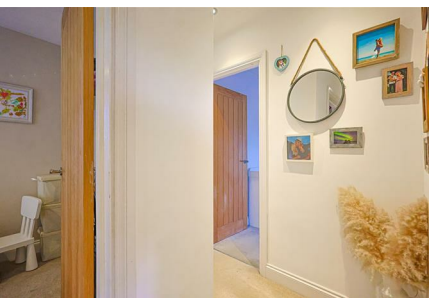
Front Garden / Driveway

Driveway for multiple vehicles to front. Path leads to front door with remainder stoned area to side.

Hallway

Wooden effect composite door with obscured windows surround to front, additional window to front, ceiling mounted light fitting, wall mounted radiator, access to under stairs cupboard and wooden effect flooring throughout.





Kitchen

Spotlights, window to rear aspect, integrated storage cupboard, part tiled walls and tiled flooring throughout. Range of wall and floor mounted units, including integrated Neff oven with gas hob and extractor fan overhead, integrated sink and dryer, integrated dishwasher and integrated fridge and freezer.

Dining Area

23'5 x 13'5 (7.14m x 4.09m)

Spotlights, wall mounted vertical radiator, feature decorative tiled wall, access to lounge and kitchen area with wooden effect flooring throughout.

Lounge

15'5 x 12'6 (4.70m x 3.81m)

Four wall mounted light fittings, bay window to front, vertical wall mounted radiator, log burner with feature fireplace around and carpeted throughout.

Bedroom One

12'5 x 12'10 (3.78m x 3.91m)

Ceiling mounted light fitting, bay window to front, wall mounted radiator and carpeted throughout.

Bedroom Two

13'6 x 9'9 (4.11m x 2.97m)

Ceiling mounted light fitting, window to rear, wall mounted radiator and carpeted throughout. Access to ensuite bathroom.

Ensuite

Spotlights, window to rear, tiled walls and tiled flooring throughout, heated towel rail, walk-in shower with rainfall showerhead, wash hand basin with integrated storage beneath and low-level WC.





Bedroom Three

10'4 x 7'0 (3.15m x 2.13m)

Ceiling mounted light fitting, window to front aspect and carpeted throughout.

Bathroom

Spotlights, window to rear, heated towel rail, bath with rainfall showerhead overhead, heated towel rail, freestanding wash handbasin with integrated storage and low-level WC.

Rear Garden

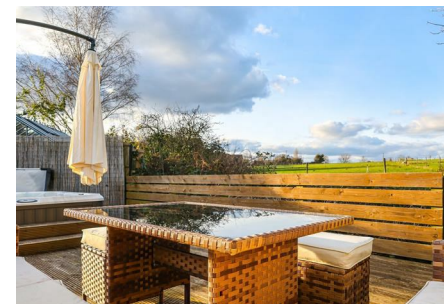
Accessed via French doors in dining area and gate side. Stone patio area with steps leading up to additional stoned patio area. Lawn area then leads to outbuilding with separate patio. To rear, raised decking area with integrated hot tub with views overlooking farmland. Detached garage access via driveway to front and rear garden.

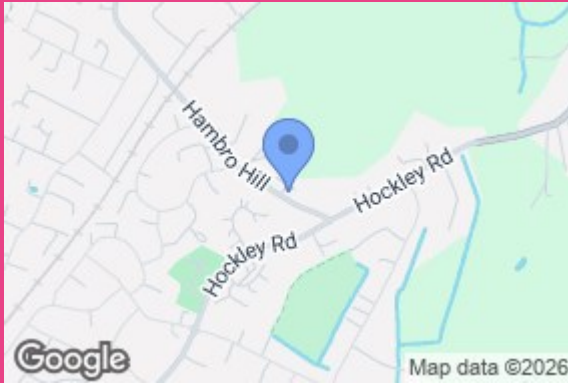
Agents Notes

Every care has been taken to ensure the accuracy of these details, however, they do not form part of any offer or contract and should not be relied upon as statements of fact. Measurement, descriptions and other information are provided in good faith and for guidance only. Prospective purchasers should verify all details independently. We have not tested any services, appliances or systems at the property.

Tenure - Freehold

Council Tax Band - D

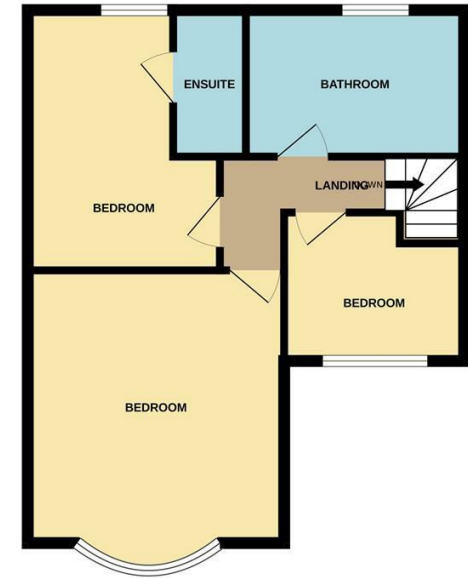




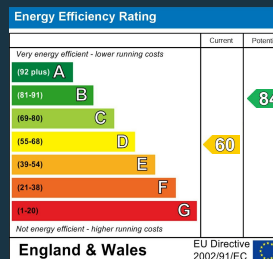
GROUND FLOOR



1ST FLOOR



Whilst every attempt has been made to ensure the accuracy of the floorplan contained here, measurements of doors, windows, rooms and any other items are approximate and no responsibility is taken for any error, omission or mis-statement. This plan is for illustrative purposes only and should be used as such by any prospective purchaser. The services, systems and appliances shown have not been tested and no guarantee as to their operability or efficiency can be given.
Made with Metropix ©2025



11 Main Road
Hockley
Essex
SS5 4QY
01702 416476
hockley@bearestateagents.co.uk
<https://www.bearestateagents.co.uk>